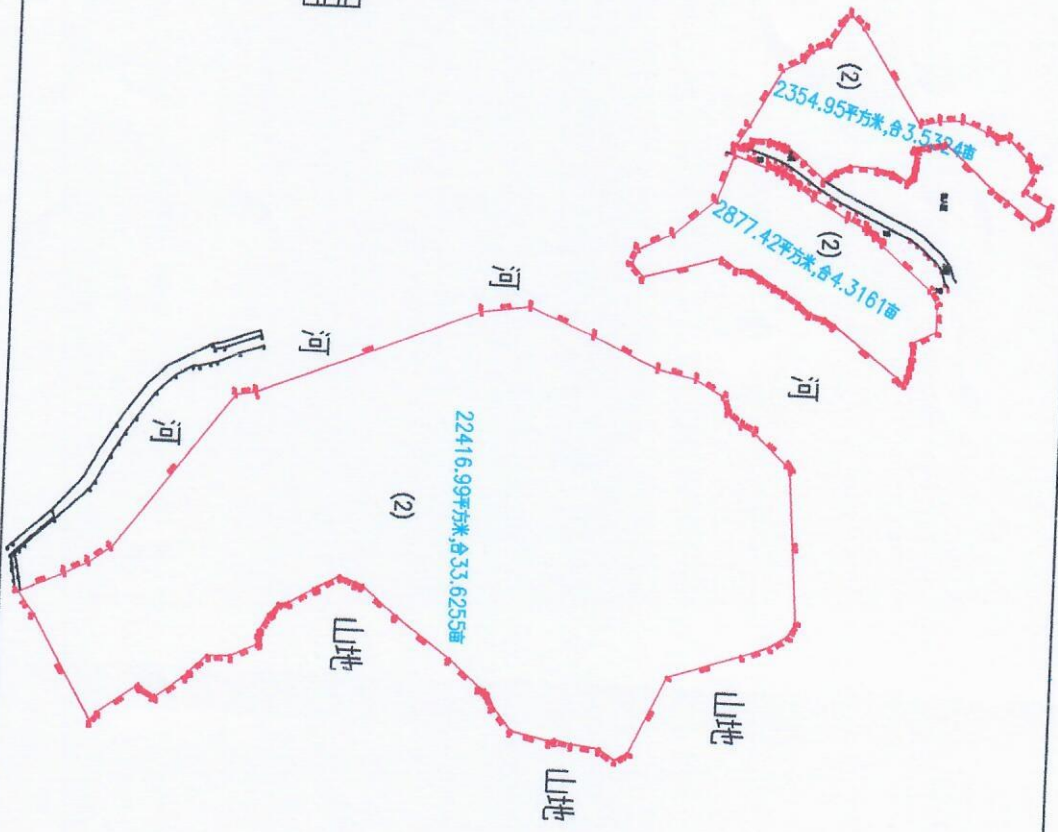


国有土地上房屋征收范围图(二)

连南瑶族自治县测绘地理信息中心

房屋坐落				房屋坐落				房屋坐落				房屋坐落			
房号	X	Y	面积	房号	X	Y	面积	房号	X	Y	面积	房号	X	Y	面积
41	2709041.73	2709041.73	4.88	401	2709041.73	2709041.73	4.88	491	2709041.73	2709041.73	4.88	581	2709041.73	2709041.73	4.88



2020年09月数字化图
CGCS2000坐标系
2007年版图式

1:2500

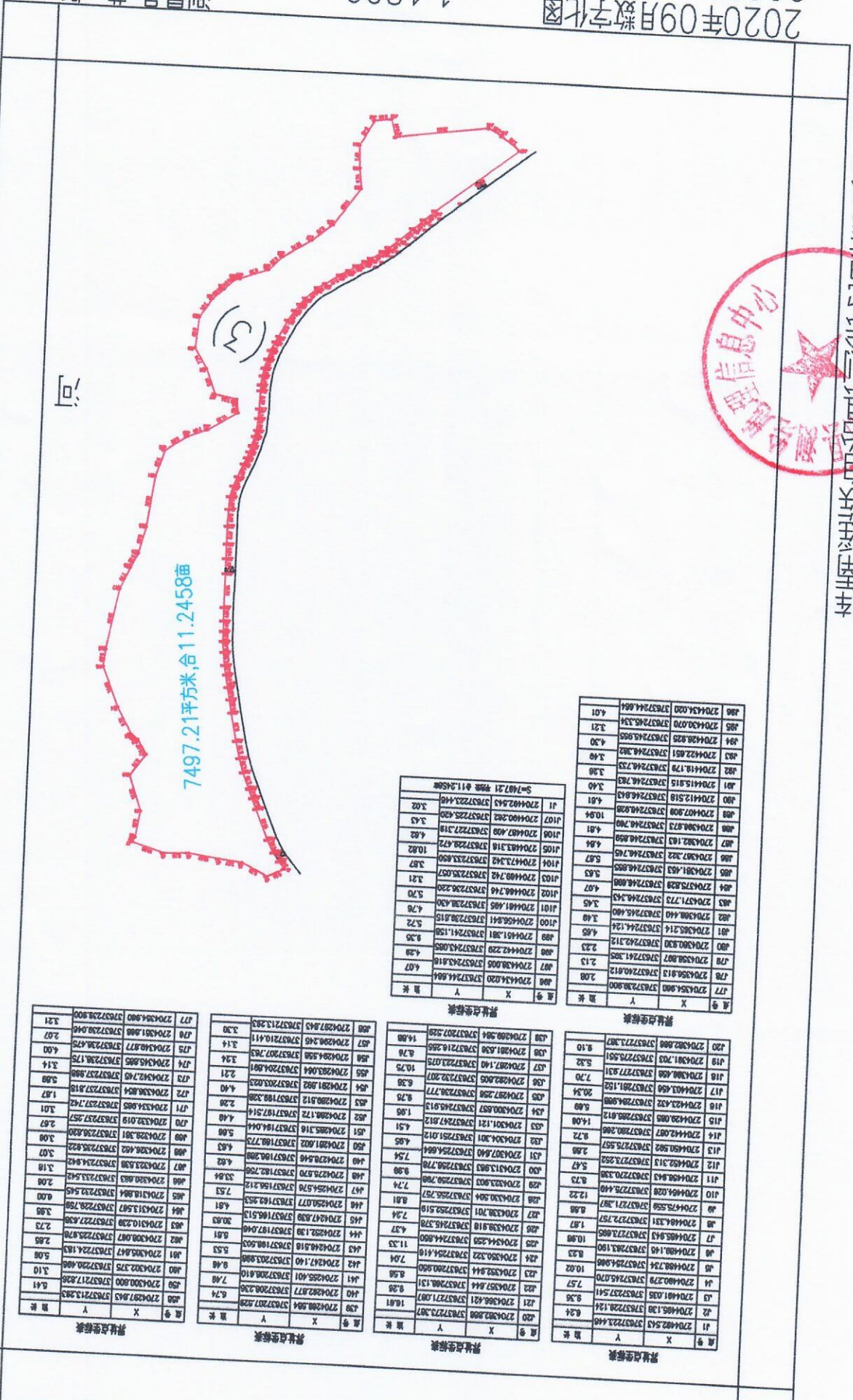
测量员: 黄挺
绘图员: 房鸿飞
检查员: 班晓清



2020年09月数字化图
CGCS2000坐标系
2007年版图式

1:1800

测量员:黄挺
绘图员:房鸿飞
检查员:班晓清



界址点坐标表

点号	X	Y	距离
177	270434.980	3783728.900	2.08
178	270435.613	3783728.012	2.13
179	270436.807	3783726.124	2.33
180	270438.000	3783724.236	2.53
181	270439.194	3783722.348	2.73
182	270440.388	3783720.460	2.93
183	270441.581	3783718.572	3.13
184	270442.775	3783716.684	3.33
185	270443.969	3783714.796	3.53
186	270445.162	3783712.908	3.73
187	270446.356	3783711.020	3.93
188	270447.550	3783709.132	4.13
189	270448.744	3783707.244	4.33
190	270449.938	3783705.356	4.53
191	270451.132	3783703.468	4.73
192	270452.326	3783701.580	4.93
193	270453.520	3783699.692	5.13
194	270454.714	3783697.804	5.33
195	270455.908	3783695.916	5.53
196	270457.102	3783694.028	5.73
197	270458.296	3783692.140	5.93
198	270459.490	3783690.252	6.13
199	270460.684	3783688.364	6.33
200	270461.878	3783686.476	6.53
201	270463.072	3783684.588	6.73
202	270464.266	3783682.700	6.93
203	270465.460	3783680.812	7.13
204	270466.654	3783678.924	7.33
205	270467.848	3783677.036	7.53
206	270469.042	3783675.148	7.73
207	270470.236	3783673.260	7.93
208	270471.430	3783671.372	8.13
209	270472.624	3783669.484	8.33
210	270473.818	3783667.596	8.53
211	270475.012	3783665.708	8.73
212	270476.206	3783663.820	8.93
213	270477.400	3783661.932	9.13
214	270478.594	3783660.044	9.33
215	270479.788	3783658.156	9.53
216	270480.982	3783656.268	9.73
217	270482.176	3783654.380	9.93
218	270483.370	3783652.492	10.13
219	270484.564	3783650.604	10.33
220	270485.758	3783648.716	10.53
221	270486.952	3783646.828	10.73
222	270488.146	3783644.940	10.93
223	270489.340	3783643.052	11.13
224	270490.534	3783641.164	11.33
225	270491.728	3783639.276	11.53
226	270492.922	3783637.388	11.73
227	270494.116	3783635.500	11.93
228	270495.310	3783633.612	12.13
229	270496.504	3783631.724	12.33
230	270497.698	3783629.836	12.53
231	270498.892	3783627.948	12.73
232	270499.086	3783626.060	12.93
233	270500.280	3783624.172	13.13
234	270501.474	3783622.284	13.33
235	270502.668	3783620.396	13.53
236	270503.862	3783618.508	13.73
237	270505.056	3783616.620	13.93
238	270506.250	3783614.732	14.13
239	270507.444	3783612.844	14.33
240	270508.638	3783610.956	14.53
241	270509.832	3783609.068	14.73
242	270511.026	3783607.180	14.93
243	270512.220	3783605.292	15.13
244	270513.414	3783603.404	15.33
245	270514.608	3783601.516	15.53
246	270515.802	3783599.628	15.73
247	270517.096	3783597.740	15.93
248	270518.290	3783595.852	16.13
249	270519.484	3783593.964	16.33
250	270520.678	3783592.076	16.53
251	270521.872	3783590.188	16.73
252	270523.066	3783588.300	16.93
253	270524.260	3783586.412	17.13
254	270525.454	3783584.524	17.33
255	270526.648	3783582.636	17.53
256	270527.842	3783580.748	17.73
257	270529.036	3783578.860	17.93
258	270530.230	3783576.972	18.13
259	270531.424	3783575.084	18.33
260	270532.618	3783573.196	18.53
261	270533.812	3783571.308	18.73
262	270535.006	3783569.420	18.93
263	270536.200	3783567.532	19.13
264	270537.394	3783565.644	19.33
265	270538.588	3783563.756	19.53
266	270539.782	3783561.868	19.73
267	270540.976	3783560.000	19.93
268	270542.170	3783558.112	20.13
269	270543.364	3783556.224	20.33
270	270544.558	3783554.336	20.53
271	270545.752	3783552.448	20.73
272	270546.946	3783550.560	20.93
273	270548.140	3783548.672	21.13
274	270549.334	3783546.784	21.33
275	270550.528	3783544.896	21.53
276	270551.722	3783543.008	21.73
277	270552.916	3783541.120	21.93
278	270554.110	3783539.232	22.13
279	270555.304	3783537.344	22.33
280	270556.498	3783535.456	22.53
281	270557.692	3783533.568	22.73
282	270558.886	3783531.680	22.93
283	270560.080	3783529.792	23.13
284	270561.274	3783527.904	23.33
285	270562.468	3783526.016	23.53
286	270563.662	3783524.128	23.73
287	270564.856	3783522.240	23.93
288	270566.050	3783520.352	24.13
289	270567.244	3783518.464	24.33
290	270568.438	3783516.576	24.53
291	270569.632	3783514.688	24.73
292	270570.826	3783512.800	24.93
293	270572.020	3783510.912	25.13
294	270573.214	3783509.024	25.33
295	270574.408	3783507.136	25.53
296	270575.602	3783505.248	25.73
297	270576.796	3783503.360	25.93
298	270577.990	3783501.472	26.13
299	270579.184	3783499.584	26.33
300	270580.378	3783497.696	26.53
301	270581.572	3783495.808	26.73
302	270582.766	3783493.920	26.93
303	270583.960	3783492.032	27.13
304	270585.154	3783490.144	27.33
305	270586.348	3783488.256	27.53
306	270587.542	3783486.368	27.73
307	270588.736	3783484.480	27.93
308	270589.930	3783482.592	28.13
309	270591.124	3783480.704	28.33
310	270592.318	3783478.816	28.53
311	270593.512	3783476.928	28.73
312	270594.706	3783475.040	28.93
313	270595.900	3783473.152	29.13
314	270597.094	3783471.264	29.33
315	270598.288	3783469.376	29.53
316	270599.482	3783467.488	29.73
317	270600.676	3783465.600	29.93
318	270601.870	3783463.712	30.13
319	270603.064	3783461.824	30.33
320	270604.258	3783459.936	30.53
321	270605.452	3783458.048	30.73
322	270606.646	3783456.160	30.93
323	270607.840	3783454.272	31.13
324	270609.034	3783452.384	31.33
325	270610.228	3783450.496	31.53
326	270611.422	3783448.608	31.73
327	270612.616	3783446.720	31.93
328	270613.810	3783444.832	32.13
329	270615.004	3783442.944	32.33
330	270616.198	3783441.056	32.53
331	270617.392	3783439.168	32.73
332	270618.586	3783437.280	32.93
333	270619.780	3783435.392	33.13
334	270620.974	3783433.504	33.33
335	270622.168	3783431.616	33.53
336	270623.362	3783429.728	33.73
337	270624.556	3783427.840	33.93
338	270625.750	3783425.952	34.13
339	270626.944	3783424.064	34.33
340	270628.138	3783422.176	34.53
341	270629.332	3783420.288	34.73
342	270630.526	3783418.400	34.93
343	270631.720	3783416.512	35.13
344	270632.914	3783414.624	35.33
345	270634.108	3783412.736	35.53
346	270635.302	3783410.848	35.73
347	270636.496	3783408.960	35.93
348	270637.690	3783407.072	36.13
349	270638.884	3783405.184	36.33
350	270640.078	3783403.296	36.53
351	270641.272	3783401.408	36.73
352	270642.466	3783399.520	36.93
353	270643.660	3783397.632	37.13
354	270644.854	3783395.744	37.33
355	270646.048	3783393.856	37.53
356	270647.242	3783391.968	37.73
357	270648.436	3783390.080	37.93
358	270649.630	3783388.192	38.13
359	270650.824	3783386.304	38.33
360	270652.018	3783384.416	38.53
361	270653.212	3783382.528	38.73
362	270654.406	3783380.640	38.93
363	270655.600	3783378.752	39.13
364	270656.794	3783376.864	39.33
365	270657.988	3783374.976	39.53
366	270659.182	3783373.088	39.73
367	270660.376	3783371.200	39.93
368	270661.570	3783369.312	40.13
369	270662.764	3783367.424	40.33
370	270663.958	3783365.536	40.53
371	270665.152	3783363.648	40.73
372	270666.346	3783361.760	40.93
373	270667.540	3783359.872	41.13
374	270668.734	3783357.984	41.33
375	270669.928	3783356.096	41.53
376	270671.122	3783354.208	41.73
377	270672.316	3783352.320	41.93
378	270673.510	3783350.432	42.13
379	270674.704	3783348.544	42.33
380	270675.898	3783346.656	42.53
381	270677.092	3783344.768	42.73
382	270678.286	3783342.880	42.93
383	270679.480	3783340.992	43.13
384	270680.674	3783339.104	43.33
385	270681.868	3783337.216	43.53
386	270683.062	3783335.328	43.73
387	270684.256	3783333.440	43.93
388	270685.450	3783331.552	44.13
389	270686.644	3783329.664	44.33
390	270687.838	3783327.776	44.53
391	270689.032	3783325.888	44.73
392	270690.226	3783323.960	44.93
393	270691.420	3783322.072	45.13
394	270692.614	3783320.184	45.33
395	270693.808	3783318.296	45.53
396	270695.002	3783316.408	45.73
397	270696.196	3783314.520	45.93
39			

国有土地上房屋征收范围图(四)

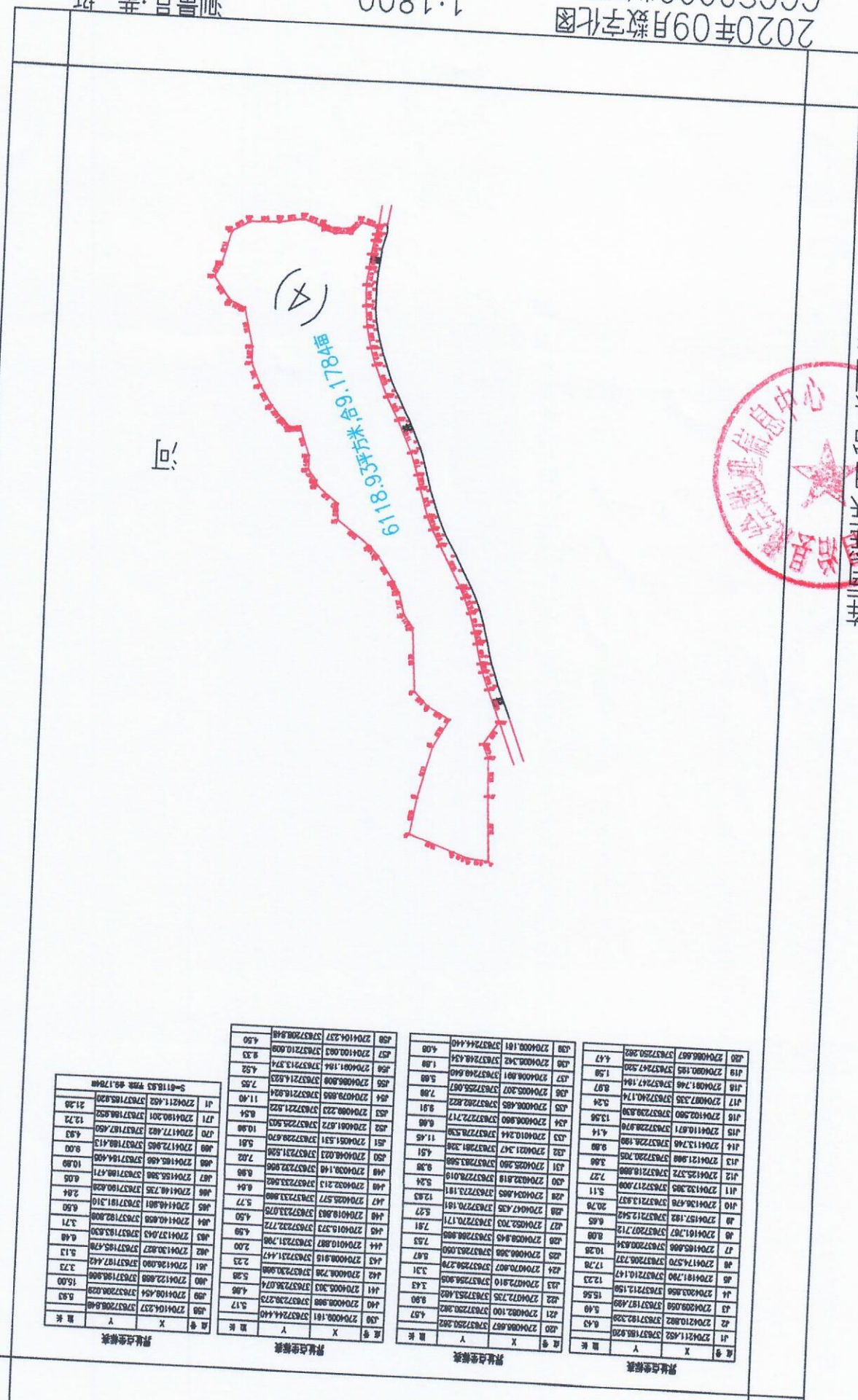
滦南县自然资源局测绘地理信息中心



2020年09月数字化图
CGCS2000坐标系
2007年版图式

1:1800

测量员:黄挺
绘图员:房鸿飞
检查员:班晓清



房屋点坐标表

点号	X	Y	长度
418	270408.687	3783750.882	4.47
419	270408.185	3783747.530	1.58
417	270408.746	3783747.184	8.87
416	270408.335	3783740.174	3.24
415	270410.280	3783738.830	13.98
414	270411.037	3783732.870	4.14
413	270411.376	3783728.188	8.88
412	270412.988	3783720.705	3.88
411	270412.572	3783721.888	7.27
410	270413.285	3783717.908	5.11
409	270413.678	3783713.837	20.78
408	270416.182	3783712.542	8.85
407	270417.470	3783711.477	8.88
406	270418.190	3783710.888	10.28
405	270418.790	3783708.737	17.78
404	270419.147	3783705.270	12.23
403	270419.158	3783712.158	15.56
402	270420.888	3783717.488	8.48
401	270421.452	3783718.920	6.43
400	270408.687	3783750.882	4.47
399	270408.100	3783750.882	4.57
398	270408.181	3783744.440	4.08

房屋点坐标表

点号	X	Y	长度
420	270408.181	3783744.440	4.08
419	270408.342	3783748.434	1.88
418	270408.891	3783748.640	8.88
417	270408.307	3783755.887	7.88
416	270408.485	3783762.822	9.91
415	270408.880	3783772.717	8.88
414	270410.244	3783778.538	11.45
413	270411.247	3783781.288	4.51
412	270408.280	3783783.588	9.88
411	270408.819	3783782.019	5.24
410	270407.483	3783770.181	12.83
409	270407.703	3783770.171	5.37
408	270408.449	3783772.772	7.81
407	270408.849	3783778.888	7.83
406	270408.388	3783783.050	8.87
405	270407.807	3783782.278	3.31
404	270407.735	3783783.482	3.43
403	270408.088	3783783.482	9.88
402	270408.181	3783784.440	4.57
401	270408.181	3783784.440	4.57

房屋点坐标表

点号	X	Y	长度
420	270410.237	3783728.848	4.50
419	270410.003	3783721.374	8.33
418	270408.888	3783721.823	4.52
417	270408.888	3783721.823	7.95
416	270408.222	3783721.823	8.54
415	270408.872	3783728.848	10.88
414	270408.181	3783728.848	5.81
413	270408.021	3783731.588	7.82
412	270408.148	3783732.888	8.88
411	270408.213	3783733.888	8.84
410	270408.577	3783733.888	5.77
409	270408.373	3783733.888	4.50
408	270408.373	3783733.888	4.50
407	270408.373	3783733.888	4.50
406	270410.888	3783731.788	2.00
405	270410.888	3783731.788	2.00
404	270410.888	3783731.788	2.00
403	270410.888	3783731.788	2.00
402	270410.888	3783731.788	2.00
401	270410.888	3783731.788	2.00
400	270410.888	3783731.788	2.00
399	270410.888	3783731.788	2.00
398	270410.888	3783731.788	2.00
397	270410.888	3783731.788	2.00
396	270410.888	3783731.788	2.00
395	270410.888	3783731.788	2.00
394	270410.888	3783731.788	2.00
393	270410.888	3783731.788	2.00
392	270410.888	3783731.788	2.00
391	270410.888	3783731.788	2.00
390	270410.888	3783731.788	2.00
389	270410.888	3783731.788	2.00
388	270410.888	3783731.788	2.00
387	270410.888	3783731.788	2.00
386	270410.888	3783731.788	2.00
385	270410.888	3783731.788	2.00
384	270410.888	3783731.788	2.00
383	270410.888	3783731.788	2.00
382	270410.888	3783731.788	2.00
381	270410.888	3783731.788	2.00
380	270410.888	3783731.788	2.00
379	270410.888	3783731.788	2.00
378	270410.888	3783731.788	2.00
377	270410.888	3783731.788	2.00
376	270410.888	3783731.788	2.00
375	270410.888	3783731.788	2.00
374	270410.888	3783731.788	2.00
373	270410.888	3783731.788	2.00
372	270410.888	3783731.788	2.00
371	270410.888	3783731.788	2.00
370	270410.888	3783731.788	2.00
369	270410.888	3783731.788	2.00
368	270410.888	3783731.788	2.00
367	270410.888	3783731.788	2.00
366	270410.888	3783731.788	2.00
365	270410.888	3783731.788	2.00
364	270410.888	3783731.788	2.00
363	270410.888	3783731.788	2.00
362	270410.888	3783731.788	2.00
361	270410.888	3783731.788	2.00
360	270410.888	3783731.788	2.00
359	270410.888	3783731.788	2.00
358	270410.888	3783731.788	2.00
357	270410.888	3783731.788	2.00
356	270410.888	3783731.788	2.00
355	270410.888	3783731.788	2.00
354	270410.888	3783731.788	2.00
353	270410.888	3783731.788	2.00
352	270410.888	3783731.788	2.00
351	270410.888	3783731.788	2.00
350	270410.888	3783731.788	2.00
349	270410.888	3783731.788	2.00
348	270410.888	3783731.788	2.00
347	270410.888	3783731.788	2.00
346	270410.888	3783731.788	2.00
345	270410.888	3783731.788	2.00
344	270410.888	3783731.788	2.00
343	270410.888	3783731.788	2.00
342	270410.888	3783731.788	2.00
341	270410.888	3783731.788	2.00
340	270410.888	3783731.788	2.00
339	270410.888	3783731.788	2.00
338	270410.888	3783731.788	2.00
337	270410.888	3783731.788	2.00
336	270410.888	3783731.788	2.00
335	270410.888	3783731.788	2.00
334	270410.888	3783731.788	2.00
333	270410.888	3783731.788	2.00
332	270410.888	3783731.788	2.00
331	270410.888	3783731.788	2.00
330	270410.888	3783731.788	2.00
329	270410.888	3783731.788	2.00
328	270410.888	3783731.788	2.00
327	270410.888	3783731.788	2.00
326	270410.888	3783731.788	2.00
325	270410.888	3783731.788	2.00
324	270410.888	3783731.788	2.00
323	270410.888	3783731.788	2.00
322	270410.888	3783731.788	2.00
321	270410.888	3783731.788	2.00
320	270410.888	3783731.788	2.00
319	270410.888	3783731.788	2.00
318	270410.888	3783731.788	2.00
317	270410.888	3783731.788	2.00
316	270410.888	3783731.788	2.00
315	270410.888	3783731.788	2.00
314	270410.888	3783731.788	2.00
313	270410.888	3783731.788	2.00
312	270410.888	3783731.788	2.00
311	270410.888	3783731.788	2.00
310	270410.888	3783731.788	2.00
309	270410.888	3783731.788	2.00
308	270410.888	3783731.788	2.00
307	270410.888	3783731.788	2.00
306	270410.888	3783731.788	2.00
305	270410.888	3783731.788	2.00
304	270410.888	3783731.788	2.00
303	270410.888	3783731.788	2.00
302	270410.888	3783731.788	2.00
301	270410.888	3783731.788	2.00
300	270410.888	3783731.788	2.00
299	270410.888	3783731.788	2.00
298	270410.888	3783731.788	2.00
297	270410.888	3783731.788	2.00
296	270410.888	3783731.788	2.00
295	270410.888	3783731.788	2.00
294	270410.888	3783731.788	2.00
293	270410.888	3783731.788	2.00
292	270410.888	3783731.788	2.00
291	270410.888	3783731.788	2.00
290	270410.888	3783731.788	2.00
289	270410.888	3783731.788	2.00
288	270410.888	3783731.788	2.00
287	270410.888	3783731.788	2.00
286	270410.888	3783731.788	2.00
285	270410.888	3783731.788	2.00
284	270410.888	3783731.788	2.00
283	270410.888	3783731.788	2.00
282	270410.888	3783731.788	2.00
281	270410.888	3783731.788	2.00
280	270410.888	3783731.788	2.00
279	270410.888	3783731.788	2.00
278	270410.888	3783731.788	2.00
277	270410.888	3783731.788	2.00
276	270410.888	3783731.788	2.00
275	270410.888	3783731.788	2.00
274	270410.888	3783731.788	2.00
273	270410.888	3783731.788	2.00
272	270410.888	3783731.788	2.00
271	270410.888	3783731.788	2.00
270	270410.888	3783731.788	2.00
269	270410.888	3783731.788	2.00
268	270410.888	3783731.788	2.00
267	270410.888	3783731.788	2.00
266	270410.888	3783731.788	2.00
265	270410.888	3783731.788	2.00
264	270410.888	3783731.788	2.00
263	270410.888	3783731.788	2.00
262	270410.888	3783731.788	2.00
261	270410.888	3783731.788	2.00
260	270410.888	3783731.788	2.00
259	270410.888	3783731.788	2.00
258	270410.888	3783731.788	2.00
257	270410.888	3783731.788	2.00
256	270410.888	3783731.788	2.00
255	270410.888	3783731.788	2.00
254	270410.888	3783731.788	2.00
253	270410.888	3783731.788	2.00
252	270410.888	3783731.788	2.00
251	270410.888	3783731.788	2.00
250	270410.888	3783731.788	2.00
249	270410.888	3783731.788	2.00
248	270410.888	3783731.788	2.00
247	270410.888	3783731.788	2.00
246	270410.888	3783731.788	2.00
245	270410.888	3783731.788	2.00
244	270410.888	3783731.788	2.00
243	270410.888	3783731.788	2.00
242	270410.888	3783731.788	2.00
241			

国有土地上房屋征收范围图（五）

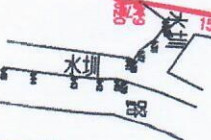
界址点坐标表

点号	X	Y	边长
J1	2703798.378	37639827.882	5.93
J2	2703799.538	37639833.799	10.32
J3	2703903.644	37639843.283	7.58
J4	2703801.555	37639850.548	3.21
J5	2703880.871	37639853.749	4.51
J6	2703900.715	37639858.213	6.38
J7	2703798.813	37639864.338	6.88
J8	2703798.572	37639871.190	5.11
J9	2703797.822	37639875.819	5.92
J10	2703792.827	37639879.514	2.88
J11	2703791.887	37639882.191	2.80
J12	2703792.212	37639884.381	13.26
J13	2703787.141	37639886.613	10.54
J14	2703782.821	37637906.131	13.90
J15	2703777.233	37637018.981	6.81
J16	2703774.047	37637024.948	5.59
J17	2703771.177	37637029.749	6.77
J18	2703768.698	37637034.482	15.78
J19	2703751.042	37637032.582	1.71
J20	2703748.337	37637032.584	

界址点坐标表

点号	X	Y	边长
J20	2703748.337	37637032.984	27.82
J21	2703723.888	37637021.798	2.28
J22	2703721.582	37637021.888	8.10
J23	2703721.833	37637013.797	15.38
J24	2703723.804	37636988.342	2.23
J25	2703723.804	37636989.289	4.90
J26	2703726.197	37636992.339	4.31
J27	2703729.234	37636984.517	38.80
J28	2703741.230	37636984.517	14.88
J29	2703755.020	37636949.538	13.33
J30	2703787.310	37636944.378	20.88
J31	2703782.988	37636930.814	8.03
J32	2703791.014	37636931.111	5.38
J33	2703793.923	37636928.578	4.67
J1	2703798.378	37636927.882	

S=5352.79 ㎡ 88.0292亩



连南瑶族自治县测绘地理信息中心

2020年09月数字化图
CGCS2000坐标系
2007年版图式

1:750

测量员:黄挺
绘图员:房鸿飞
检查员:班晓清